



condominium realty®

RESORT OFFICES

Ocean City

10401 Coastal Highway
Ocean City, Maryland 21842
(301) 524-6111
Baltimore 337-2813
Washington 565-2979

10900 Coastal Highway
Ocean City, Maryland 21842
(301) 524-8111

VIRGINIA OFFICE

Alexandria

235 S. VanDorn Street
Alexandria, Virginia 22304
(703) 751-4800

THE PLAZA

A NEW OCEANFRONT CONDOMINIUM COMPLEX LOCATED ALONG THE
"GOLD COAST" AT 9800 COASTAL HIGHWAY BETWEEN THE PYRAMID
AND CENTURY I CONDOS IN OCEAN CITY, MARYLAND.

AFFORDABLE PRICES

- . ALL DIRECT OCEANFRONT
- . 17 FLOORS
- . 220 UNITS
- . EXTREMELY SPACIOUS FLOOR PLANS
- . 3 BEDROOM 2 BATH FLOOR PLAN
- . 2 BEDROOM 2 BATH FLOOR PLAN
- . WHIRLPOOL BATHS IN ALL UNITS
- . LARGE OCEANFRONT DECK
- . SWIMMING POOL
- . QUALITY CONSTRUCTION
- . MAINTENANCE-FREE EXTERIOR
- . BUILT FOR 'YEAR ROUND LIVING
- . WELL INSULATED
- . HEAT PUMPS
- . IN-HOUSE MAINTENANCE

A LATE SPRING '84 OCCUPANCY IS ANTICIPATED.

WE ARE ACCEPTING RESERVATIONS WITH A TWO THOUSAND DOLLAR
DEPOSIT.

CONTACT OUR OFFICE FOR FURTHER INFORMATION

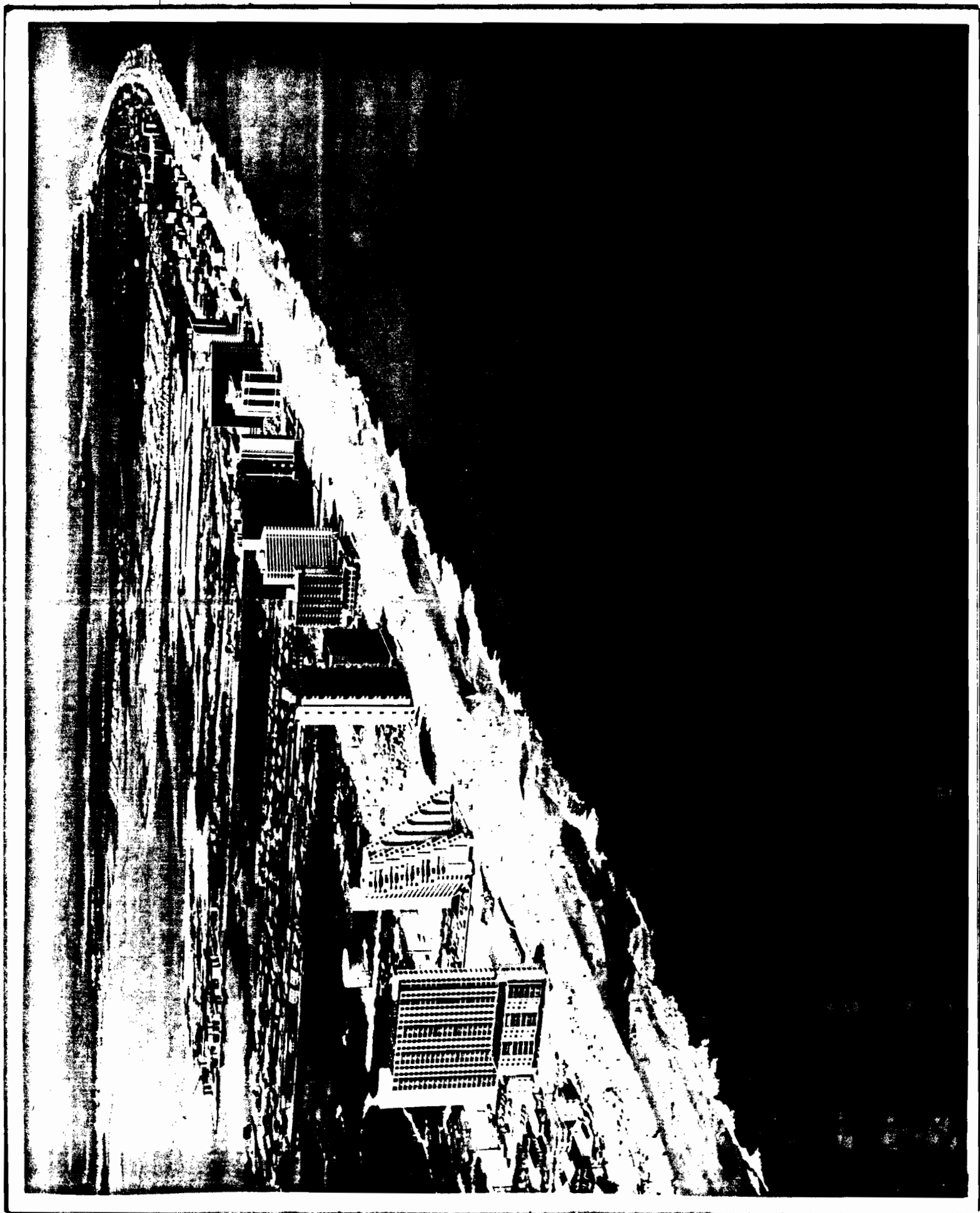
COLLECT 301-524-6111
BALTIMORE DIRECT 337-2813 ←
D.C. DIRECT 565-2979

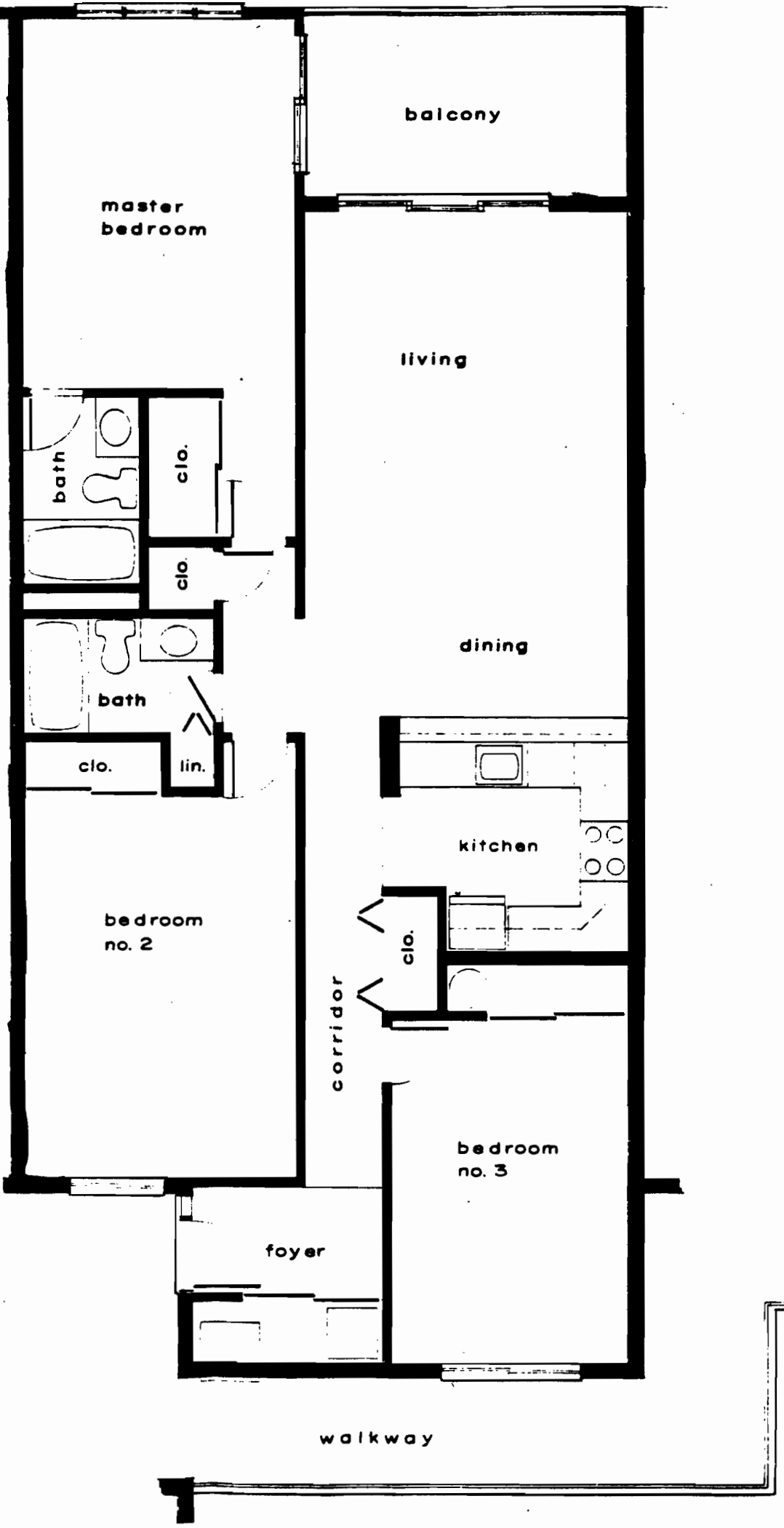
MULTIPLE LISTING SERVICE

MLS



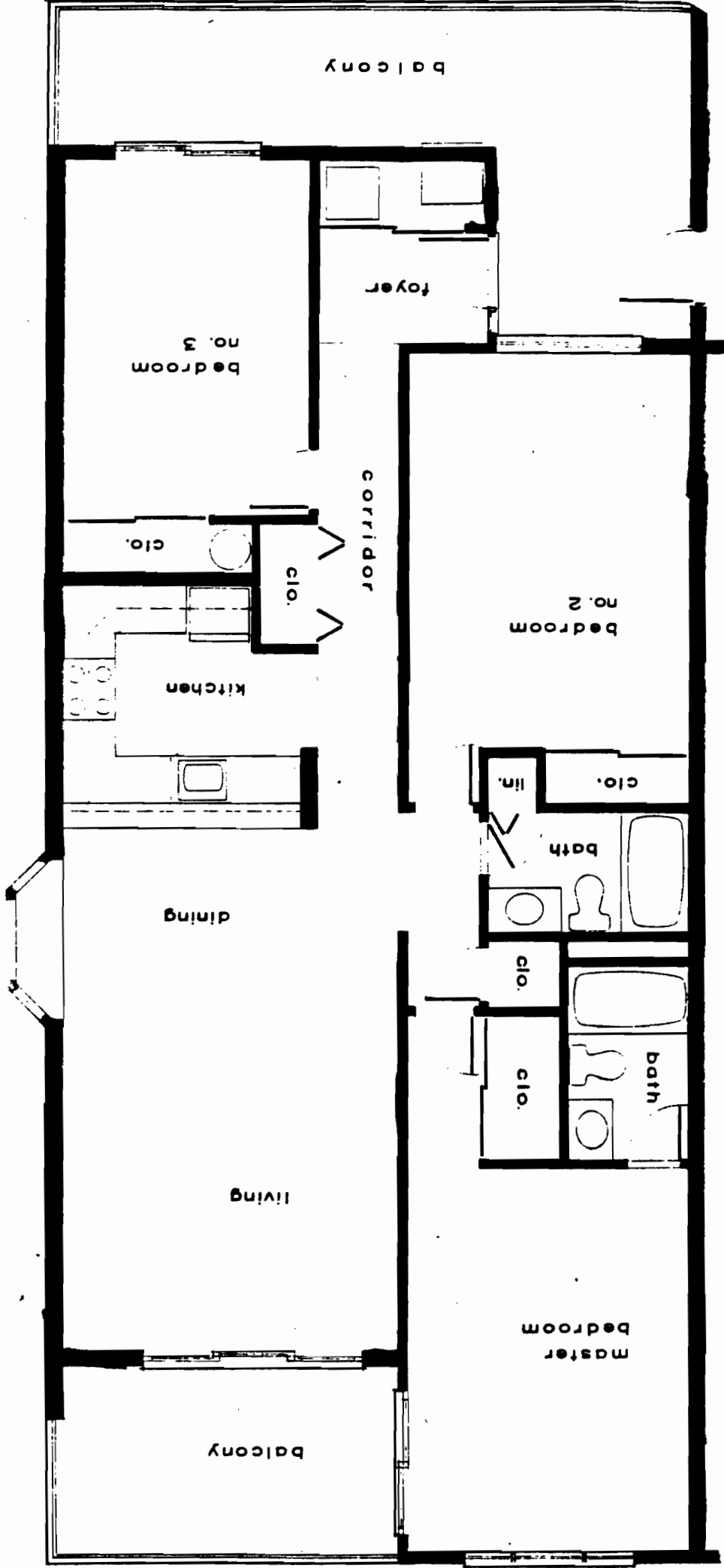
REALTOR®

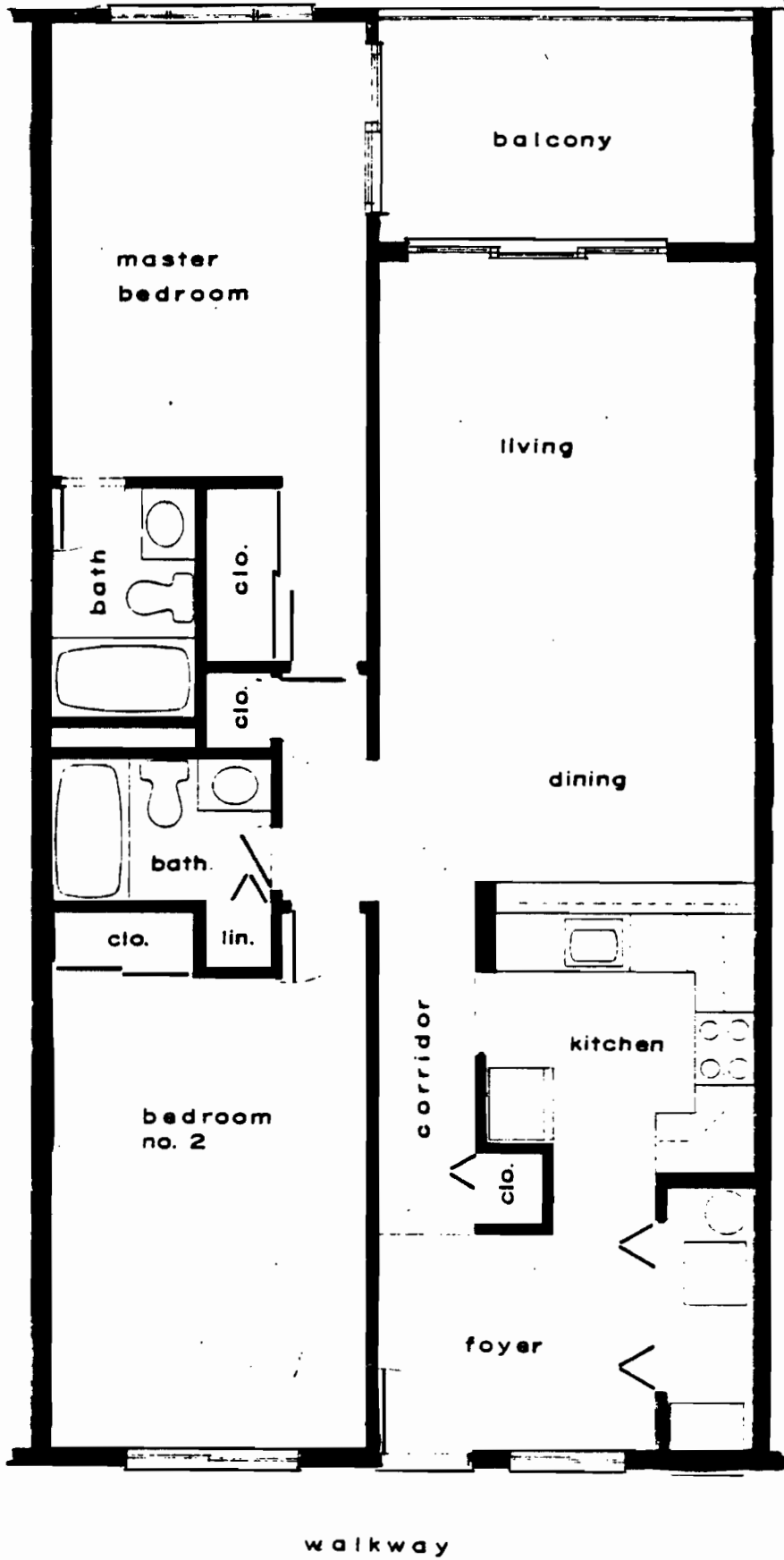




THREE BEDROOM

THREE BEDROOM





TWO BEDROOM

	13	12	11	10	09	08	07	06	05	04	03	02	01
17	173,900	138,900	140,900	140,900	140,900	151,900	138,900	151,900	140,900	140,900	140,900	138,900	175,900
16	155,900	123,900	125,900	125,900	125,900	137,900	123,900	137,900	125,900	125,900	125,900	123,900	157,900
15	155,900	123,900	125,900	125,900	125,900	137,900	123,900	137,900	125,900	125,900	125,900	123,900	157,900
14	155,900	123,900	125,900	125,900	125,900	137,900	123,900	137,900	125,900	125,900	125,900	123,900	157,900
13	155,900	123,900	125,900	125,900	125,900	137,900	123,900	137,900	125,900	125,900	125,900	123,900	157,900
12	155,900	123,900	125,900	125,900	125,900	137,900	123,900	137,900	125,900	125,900	125,900	123,900	157,900
11	155,900	123,900	125,900	125,900	125,900	137,900	123,900	137,900	125,900	125,900	125,900	123,900	157,900
10	155,900	123,900	125,900	125,900	125,900	137,900	123,900	137,900	125,900	125,900	125,900	123,900	157,900
09	157,900	125,900	127,900	127,900	127,900	139,900	125,900	139,900	127,900	127,900	127,900	125,900	159,900
08	157,900	125,900	127,900	127,900	127,900	139,900	125,900	139,900	127,900	127,900	127,900	125,900	159,900
07	157,900	125,900	127,900	127,900	127,900	139,900	125,900	139,900	127,900	127,900	127,900	125,900	159,900
06	157,900	125,900	127,900	127,900	127,900	139,900	125,900	139,900	127,900	127,900	127,900	125,900	159,900
05	157,900	125,900	127,900	127,900	127,900	139,900	125,900	139,900	127,900	127,900	127,900	125,900	159,900
04	157,900	125,900	127,900	127,900	127,900	139,900	125,900	139,900	127,900	127,900	127,900	125,900	159,900
03	157,900	125,900	127,900	127,900	127,900	139,900	125,900	139,900	127,900	127,900	127,900	125,900	159,900
02	157,900	125,900	127,900	127,900	127,900	139,900	125,900	139,900	127,900	127,900	127,900	125,900	159,900
01	157,900	125,900	127,900	127,900	127,900	139,900	125,900	139,900	127,900	127,900	127,900	125,900	159,900

Condominium Realty Corp.

10401 Coastal Highway
Ocean City, MD 21842

Re: THE PLAZA
An Oceanfront Condominium

Gentlemen:

We understand that you have been designated as the sales agents for units in THE PLAZA, a multi-unit condominium to be constructed on the property located on the Ocean at 9800 Coastal Highway, in the Town of Ocean City, County of Worcester, State of Maryland.

We have been advised of the following:

1. The condominium will consist of type units:
 - a. TYPE "A" being a three (3) bedroom deluxe unit with two (2) baths; and
 - b. TYPE "B" being a two (2) bedroom deluxe unit with two (2) baths:
2. Construction is scheduled to begin in mid '83. The Owner proposes to subject the property to a condominium regime as soon as the buildings and land improvements are complete.
3. The condominium has not yet been registered with the Secretary of State and, therefore, no unit in the condominium may be sold or offered for sale until this has been done; and
4. You are not yet selling or offering for sale any of THE PLAZA units, but will do so promptly after registration of the condominium, which should be effected within approximately ninety (90) days.

We have inspected the site of the proposed PLAZA, reviewed the building's floor plans and are interested in purchasing UNIT # _____ UNIT TYPE _____ at and for a purchase price not to exceed _____ (\$ _____).

If there is any way in which you may reserve this unit for us until sales are permitted and a contract is presented to us for our signatures, we ask you to do so. Our bonafide intent to buy this unit is evidenced by a deposit with you in the amount of TWO THOUSAND DOLLARS (\$2,000.00) payable to CONDOMINIUM REALTY CORP. of OCEAN CITY ESCROW ACCOUNT, which is attached. This deposit (interest bearing) is made upon your assurance that it will be refunded to us promptly after our demand for it, or should a properly registered condominium not materialize, or should we decline to execute the contract of sale within ten (10) days after it has been presented to us for signatures. Upon refund of our deposit, when and as required, neither party will have any further right or liability hereunder.

NAME _____

ADDRESS _____

CITY _____ STATE _____ ZIP CODE _____

HOME PHONE _____ OFFICE PHONE _____

THE ABOVE-MENTIONED DEPOSIT IS ACCEPTED ON THE TERMS SET FORTH IN THE FOREGOING LETTER.

SIGNED and ACCEPTED this _____ day of _____, 1983.

WITNESS:

Reservation Holder

Reservation Holder

WITNESS:

CONDOMINIUM REALTY CORP. of OCEAN CITY

As to M.C.F.

By _____
Mark C. Fritschle, President/Broker

WITNESS:

THE PLAZA JOINT VENTURE

By _____